

TOSSED AWAY

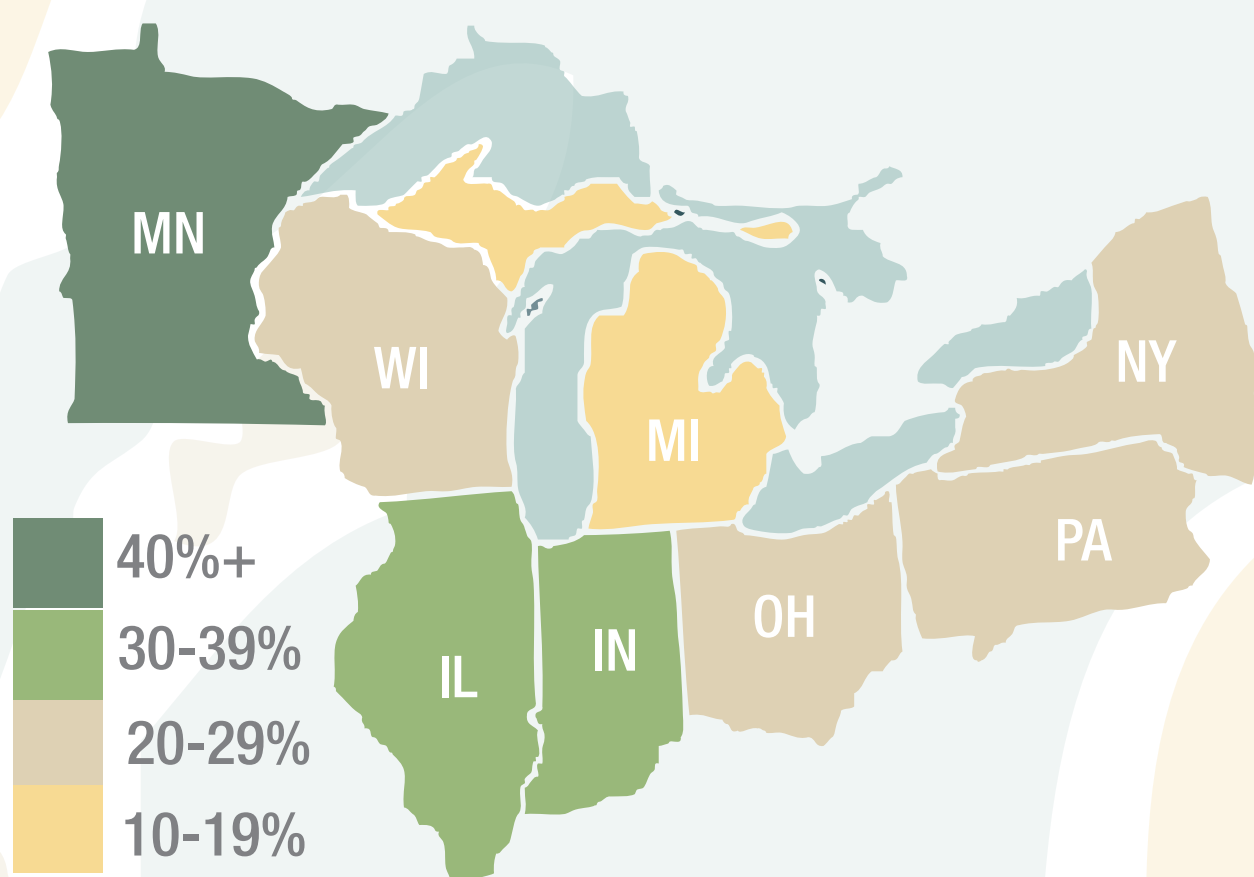
WASTE & RECYCLING IN MICHIGAN

15-20%

Michigan's recycling rate

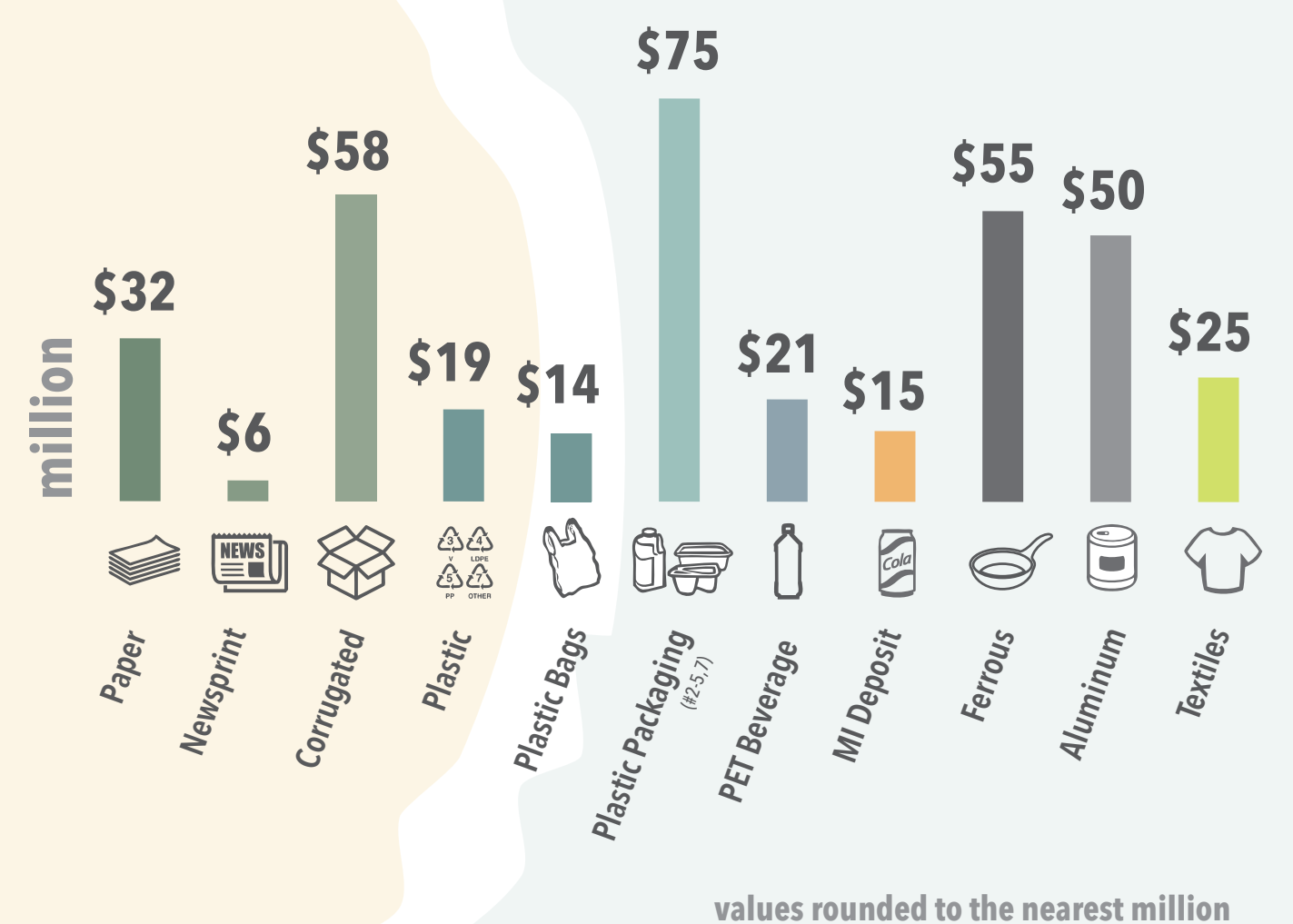
LOWEST IN THE REGION

Michigan's recycling rate is lowest in the Great Lakes and lower than the national average of 34%



WHAT IT COSTS TO TOSS

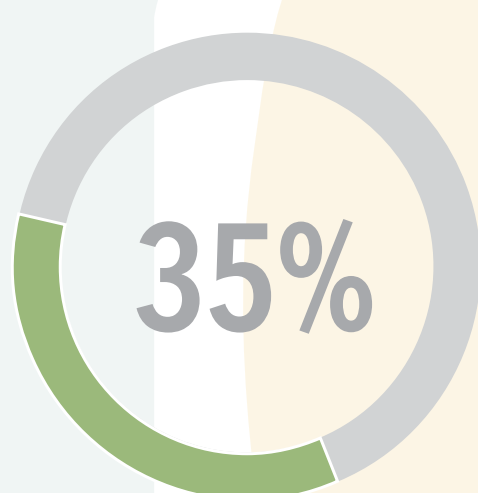
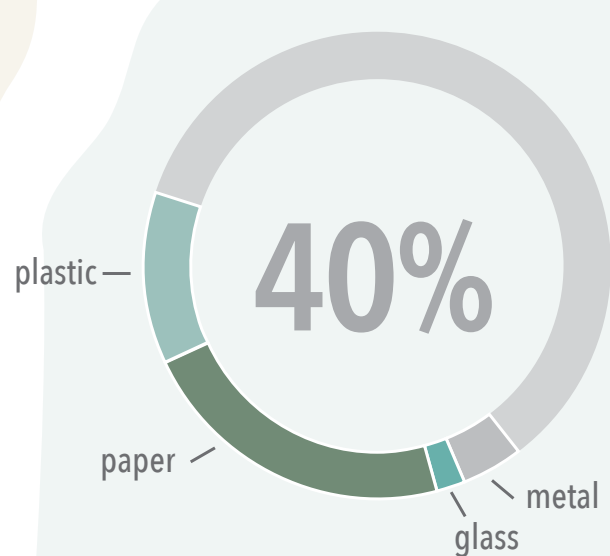
total value of commodities disposed



WHAT WE COULD RECOVER

recyclable with commodity value

organic/compostable

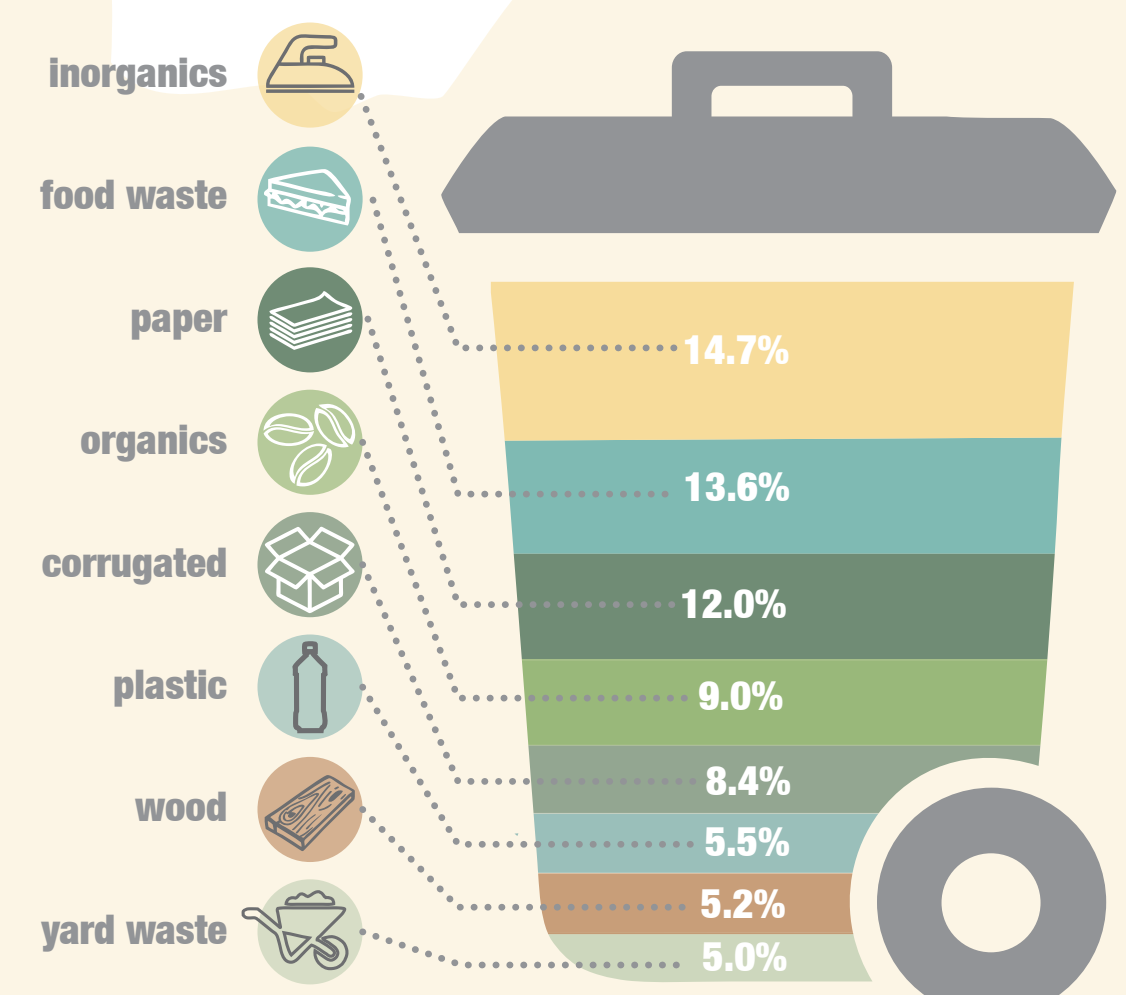


\$368

MILLION
in recyclable material landfilled

TOP 8 MATERIALS

mean % by weight



ECONOMIC & JOB BENEFITS

The economic impact of capturing this material would generate

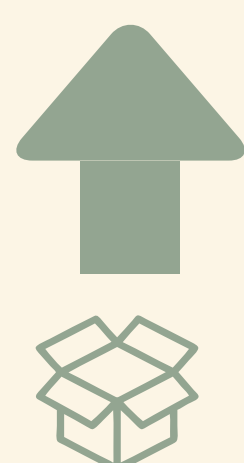


\$399 million

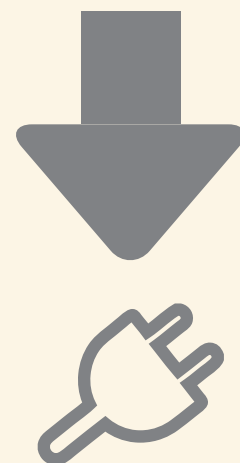


2,619 jobs

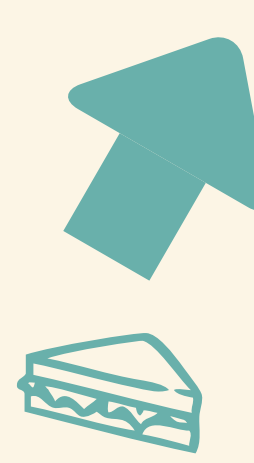
WHAT WE CAN DO



increase corrugated cardboard recovery



Decrease e-waste



Promote food waste diversion

LANDFILLS AUDITED

- 1 Elk Run landfill
- 2 Central Sanitary landfill
- 3 Kent Waste to Energy Facility
- 4 Muskegon Co. landfill
- 5 North Kent transfer
- 6 Oakland Heights
- 7 Ottawa Co. Farms
- 8 South Kent landfill

Data based on a 2016 waste characterization study. Full study @ wmsbf.org

